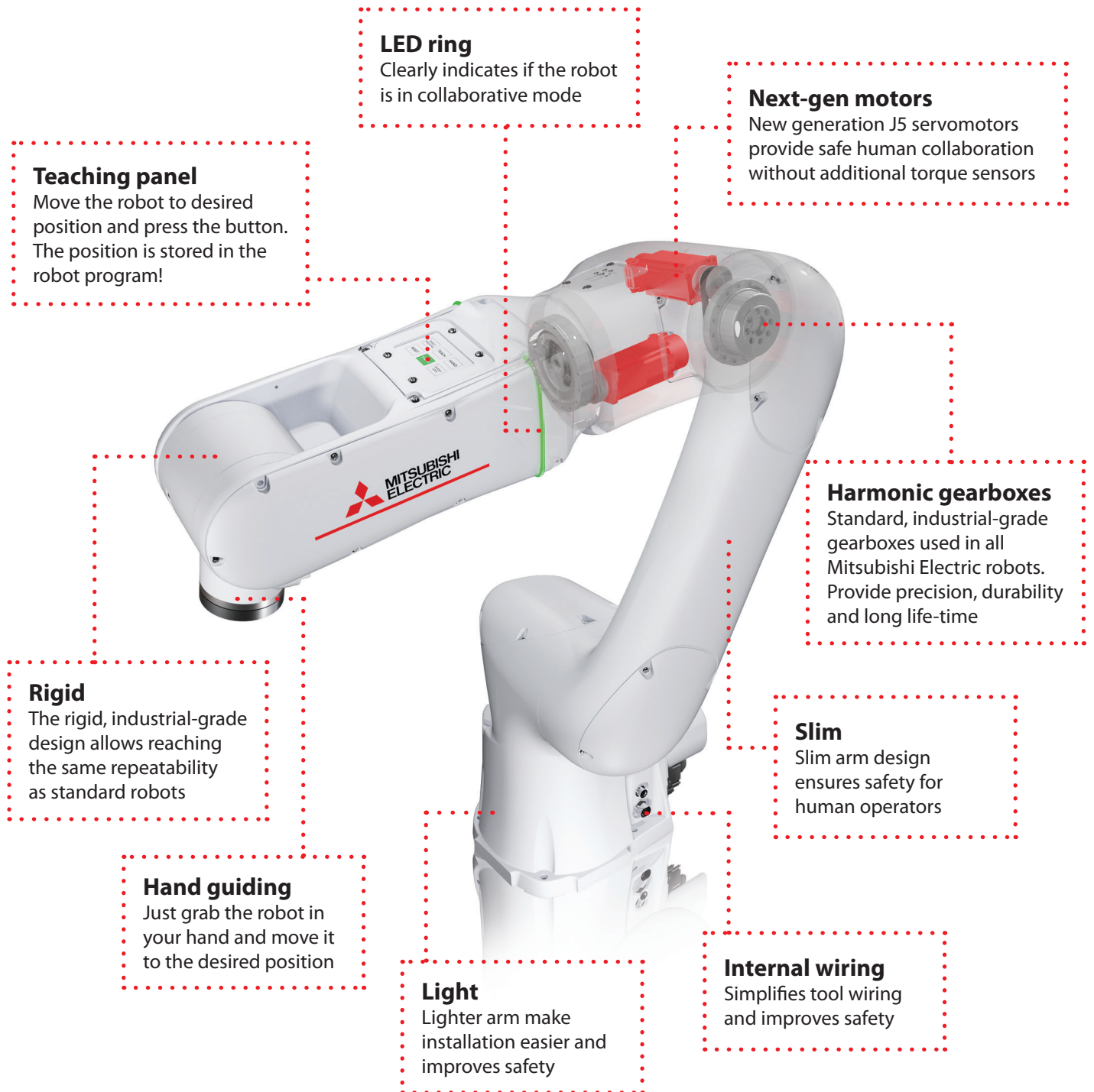




**TRULY INDUSTRIAL
TRULY COLLABORATIVE**

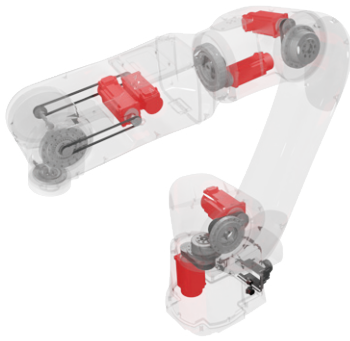
MELFA

assa**ista**



Truly industrial collaborative robot

- Industrial grade design
- Standard robot's lifetime
- Certified by TÜV
- Compatible with standard industrial equipment
- Easy to program



Industrial design

The arm is based on our 40-years experience in the design of industrial robots. Most of the used solutions are the same as in a standard, industrial robot. It gives high **rigidity** and **repeatability** – keeps high quality of your production and allows tasks that require high precision. Another advantage is a **long life-time** – the same as our other robots, working even above 10 years. All of that enhanced by **preventive, predictive** and **remote** maintenance functions.

Safety

Speed, position and force are safely limited. Compliance with ISO 10218-1 and **ISO/TS 15066** documents is confirmed by **TÜV certificate**. Maximum forces generated by the arm are within ranges defined by ISO/TS 15066. All of that without additional force or torque sensors – thanks to our **next-gen J5 servomotors**. You can also connect safety devices to detect if nobody is around and operate then with higher, not collaborative speed.

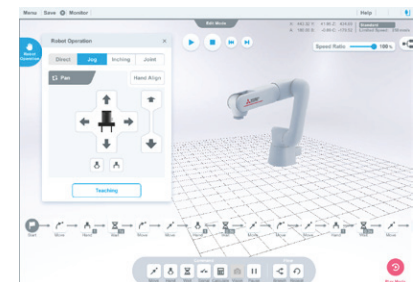


Integration

Assista is powered by compact **CR800 controller** - the same that is used for all other Mitsubishi Electric's robots. There is no difference in wiring, operation and programming. Mix collaborative and standard robots, use full-spectrum of included features, easily integrate with Mitsubishi Electric's **PLC, HMI, servomotor, CNC** and utilise a variety of industrial networks, like **CC-Link IE Field**, Profinet, EtherNet/IP or EtherCAT.

Programming

For simple tasks, we've prepared an intuitive, touch-enabled, graphical programming tool – **RT VisualBox**. Build your programs with simple **blocks**, without programming knowledge. Utilise step-by-step graphical **wizards** for setting all necessary parameters. For more complex tasks, you can program Assista using RT ToolBox3 – exactly the same way like our other robots.



Hand guiding

Simply **grasp** the arm and **move it** to the desired position. Then press the single button on the **teaching panel** on the arm. That's all! The position is added to the robot program.

Build-in functionalities

Easily attach compatible **collaborative grippers**. Connect 2D or 3D **vision systems** to enhance your application. Utilise conveyor **tracking** function to pick objects in motion. All of that as standard, **build-in** functionalities of Assista.



Technical data

RV-5AS-D

| | | |
|-------------------------|------------|--------------------------------------|
| Type | | Vertical 6-axis |
| Payload | | 5 kg |
| Reach | | 910 mm |
| Repeatability | | ±0.02 mm |
| Maximum speed | | 1000 mm/s |
| Installation | | Floor, hanging |
| Protection level | | IP54, ISO5 |
| Grease | | standard/food |
| Weight | | 30 kg |
| Safety | | Cat. 3, PL d |
| Certification | | TÜV: ISO 10218-1, ISO/TS 15066 |
| Safety I/O | | 8 inputs / 4 outputs |
| Internal wiring | I/O | 8 inputs / 8 outputs + 4 spare wires |
| | LAN | x1 Cat. 5e |
| | Air | φ4 x 4 |
| Power supply | | AC 200-230V, single phase |

Included



Robot arm



Controller



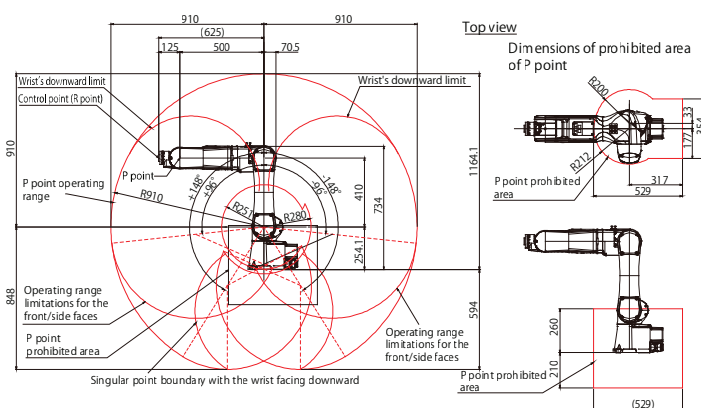
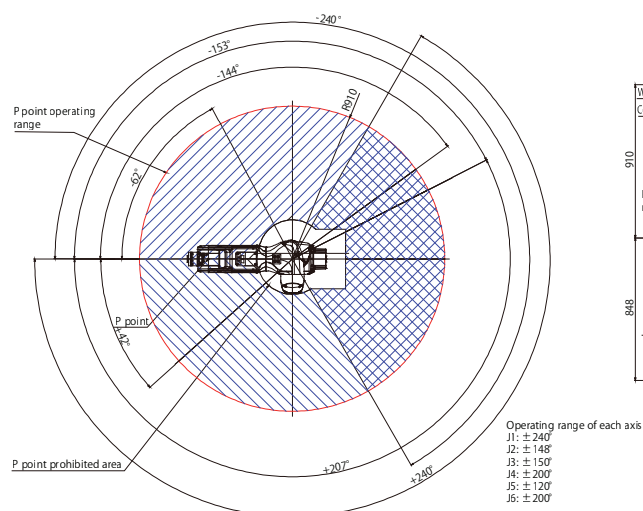
Safety I/O unit



Machine cable (5m)



RT VisualBox Trial



Options

| Article | Name | Model | Specification |
|---------|----------------------------|--------------------|---|
| 250471 | Solenoid valve set | 1F-VD02E-01 | 2x source type 2/5 pneumatic valves |
| 218854 | Teach pendant | R56TB | Standard teach pendant with 6.5" touch screen, 7m cable |
| 218862 | Digital I/O interface | 2D-TZ378 | Source type, 32 inputs / 32 outputs |
| 218857 | Digital I/O cable | 2D-CBL05 | 16 inputs / 16 outputs, 5m, one end of the cable is loose |
| 324560 | CC-Link IE Field interface | 2F-DQ535-CCIEF-SET | |
| 413963 | EtherCAT interface | 2F-DQ535-ECT-SET | |
| 282409 | EtherNet/IP interface | 2D-TZ535-EIP-SET | |
| 269546 | Profinet interface | 2D-TZ535-PN-SET | |
| 313064 | Force sensor | 4F-F5002H-W200 | 200N force sensor for installation on the robot flange |
| 324579 | Standard software | RT ToolBox3 | Standard programming and simulation software |
| | Visual software | RT VisualBox | Visual programming and simulation software |

Global Partner. Local Friend.

Interested? Contact us!

+48-12-630-47-00 @ mpl@mpl.mee.com